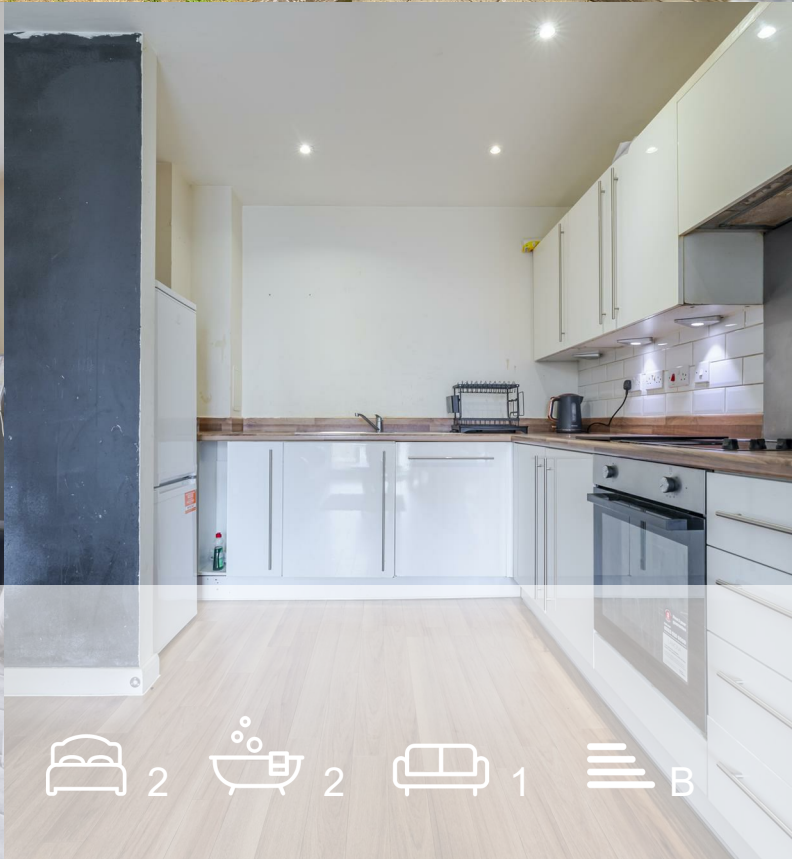




MOVE INN ESTATES
MAKING THE RIGHT MOVE

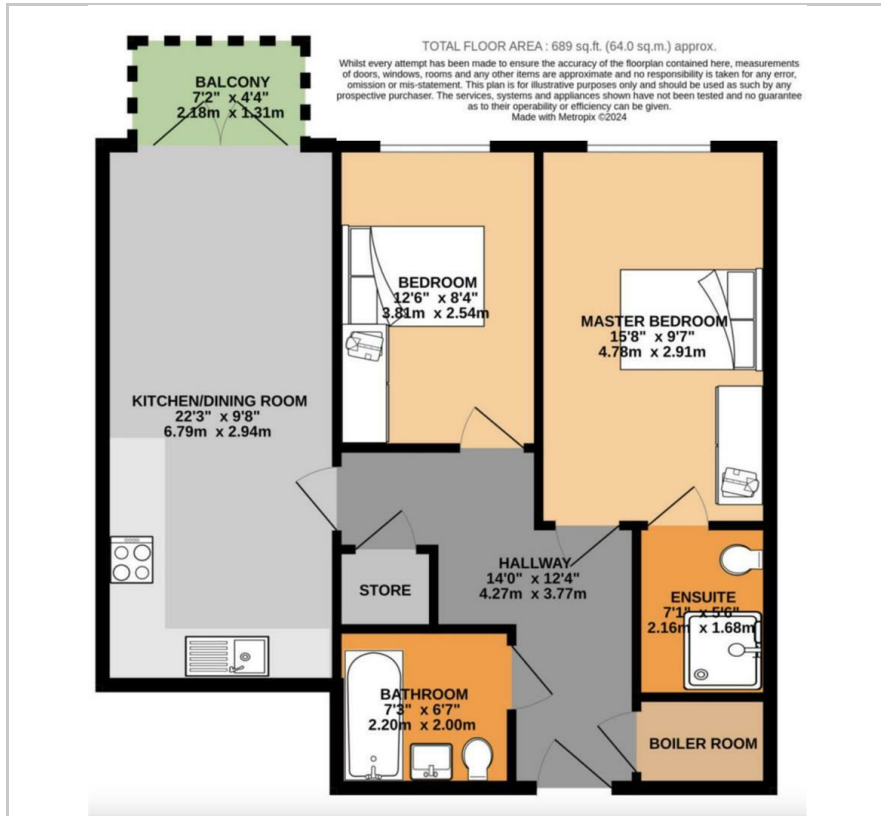


Featherstone Road
Southall, UB2 5GQ
Offers Over £300,000



 2  2  1  B

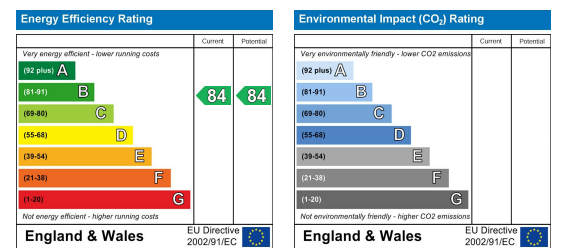
Floor Plan



Area Map



Energy Efficiency Graph



Viewing

Please contact our Move Inn Estates - Sales Office on 0208 574 4966 if you wish to arrange a viewing appointment for this property or require further information.

- Two bedrooms
- Two bathrooms
- Second floor
- Long lease - 968 years
- Allocated Parking
- Balcony

Move Inn Estates present this beautifully finished 2-bedroom, 2-bathroom apartment in the ever-popular Featherstone Court in Southall. Offering a spacious open-plan kitchen and living area, this home is perfect for both relaxing and entertaining. High-quality fixtures and a contemporary design throughout create a stylish and comfortable living space.

Property Details:
Lease - 986 years
Ground Rent - £210pa
Service Charge - £4,490pa
Allocated Parking

Ideally suited for families, professionals, or investors, the apartment is located in a prime residential area with easy access to excellent local amenities. Well-regarded schools such as Havelock Primary (0.3km), Dairy Meadow (0.7km), and Featherstone Primary (1.2km) are all close by.

Commuters benefit from superb transport links, with Southall Station just 0.9km away, and both Hayes & Harlington and Hounslow West Underground within easy reach.

For daily convenience, Tesco Express (0.5km) and Asda Superstore (1.2km) are nearby, along with a variety of restaurants, cafes, and green spaces. The area also offers excellent access to healthcare, fitness centres,



These particulars, whilst believed to be accurate are set out as a general outline only for guidance and do not constitute any part of an offer or contract. Intending purchasers should not rely on them as statements of representation of fact, but must satisfy themselves by inspection or otherwise as to their accuracy. No person in this firm's employment has the authority to make or give any representation or warranty in respect of the property.